

NCT's Ruddy Good Day Out





37 places to visit on a “Ruddy Good Day Out”!

This latest edition of NCT’s handy guide, produced in partnership with the RUDDINGTON.info website, highlights even more things you can see and do during a visit to this pretty and popular South Nottinghamshire village.

For the first time we’re listing dozens of independent shops, cafés, pubs and restaurants taking part in Ruddington Village Centre Partnership’s brand new ‘Loyalty Card’ scheme - offering special deals and discounts to their customers. That’s in addition to the village’s many other tourists attractions - such as its three museums, historic churches, award winning country park, heritage railway and 18 hole golf course.

Established annual events such as its Beer Festival, Summer Fayre, ‘Ruddington Wakes’ Funfair and Christmas Market make the village a magnet for visitors throughout the year.

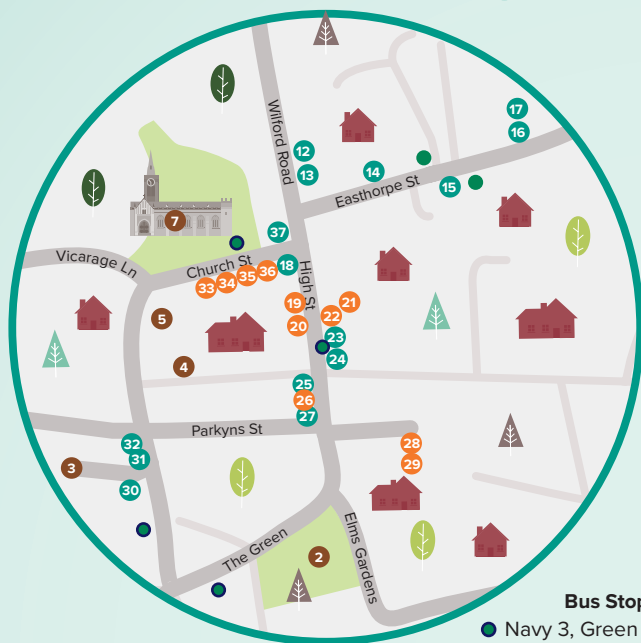
Ruddington benefits from frequent and direct NCT buses from the City, West Bridgford, Wilford and Clifton – which are greener than ever before. The Navy 3 fleet has been retrofitted with technology that reduces tailpipe emissions by 90% - whilst modern, eco-friendly bio-gas buses have been introduced for the Green 10.

All day travel costs just £4.00 and you can reduce this price further by using the NCTX Buses App or Robin Hood card – and there are cheaper fares for groups and under-19s, too. Also you’ve four different options to choose from on the prepaid Easyrider Smartcard. It really does make sense to leave your car at home!

Use this booklet to plan YOUR “Ruddy Good Day Out”...

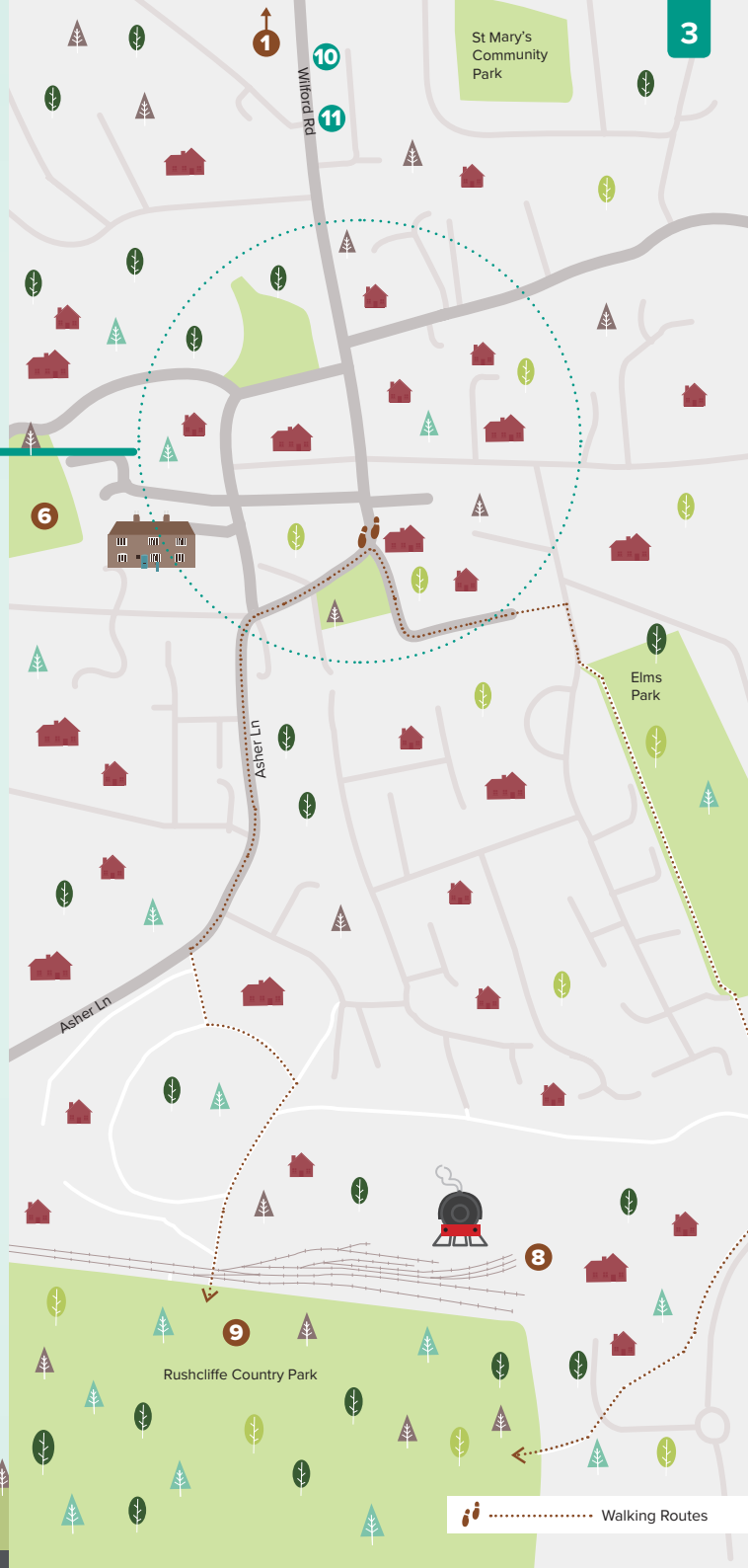


2 Guide to Ruddington



Key: Tourist Places

- 1 Ruddington Grange Golf Club *See Pg. 7*
Use stop: Grange Court - **Navy 3**
- 2 The Human Sundial *See Pg. 7*
Use stop: Ruddington Green - **Navy 3, Green 10**
- 3 The Framework Knitters' Museum *See Pg. 7*
Use stop: Chapel Street - **Navy 3, Green 10**
- 4 Ruddington Methodist Church *See Pg. 9*
Use stop: Chapel Street - **Navy 3, Green 10**
- 5 The Village Museum *See Pg. 9*
Use stop: Ruddington Church - **Navy 3, Green 10**
- 6 The Graves of the Rorke's Drift Survivors *See Pg. 9*
Use stop: Ruddington Church - **Navy 3, Green 10**
- 7 St Peter's Church *See Pg. 11*
Use stop: Ruddington Church - **Navy 3, Green 10**
- 8 Great Central Railway Nottingham *See Pg. 11*
Use stop: Rushcliffe Country Park - **Green 10C** (Sundays & Bank Holidays) or The Green - **Navy 3, Green 10** (other days), with a short walk from The Green via Elms Park to the GCRN.
- 9 Rushcliffe Country Park *See Pg. 13*
Use stop: Rushcliffe Country Park - **Green 10C** (Sundays & Bank Holidays) or The Green - **Navy 3, Green 10** (other days), with a short walk from The Green via Asher Lane to Rushcliffe Country Park.



Visitors and residents can now receive discounts and special offers from all the retailers listed below who are members of **Ruddington Village Centre Partnership's**

new **Loyalty Card** scheme*. The cards are **FREE** and you can pick one up from any of the participating traders.



Key: Food & Drink and Shops

Wilford Road | Navy 3 to Clifton Road

- 10 The Ruddington Arms
- 11 The Victoria Tavern
- 12 China City
- 13 Apotheka

Easthorpe Street | Green 10 to Easthorpe Street

- 14 The Red Heart
- 15 The Country Cottage Hotel
- 16 The Three Crowns
- 17 The Three Spices

High Street | Navy 3 or Green 10 to High Street

- 18 Philo's Delicatessen
- 19 Post Office
- 20 Perkins Hardware
- 21 Martin's Barbers
- 22 Thomas James Estate Agent
- 23 Dhaka Delhi
- 24 The Frame Breakers
- 25 Jasper's Café
- 26 Phoenix Flowers
- 27 Black Cat Café

Kempson Street | Navy 3 or Green 10 to High Street

- 28 ARC Plumbing & Heating
- 29 National Car Finder

Church Street | Navy 3 or Green 10 to Chapel Street or Ruddington Church

- 30 The White Horse
- 31 Gino's Ristorante
- 32 The Old Bakehouse Tearoom
- 33 Ruddington Village Butchers
- 34 Aveda At Eleven
- 35 David Richards Jewellers
- 36 The Honeycomb Christian Charity Shop
- 37 Ruddington Fish Bar

Simply scan the QR code below with your smartphone or tablet to discover all the latest discounts and offers available at **RUDDINGTON.info/loyalty**

#RUDDYGOODOFFERS

*Correct at the time of going to press but subject to subsequent additions or deletions





Ruddington Grange Golf Club

Use stop: Grange Court - Navy 3

Since it was created in 1988, Ruddington Grange has acquired a reputation as one of Nottinghamshire's very best courses, hosting frequent major golf days. Non-members can try out the 18 hole par 72 golf course or just pop in for a drink and a meal. It is open seven days a week and green fees start at just £10 per person.



The Human Sundial

Use stop: Ruddington Green - Navy 3, Green 10

Children in particular love this clever, educational feature on The Green. Whenever the sun is shining they can stand on the plate at the relevant month and use the shadow of their body to tell the time!



The Framework Knitters' Museum

Use stop: Chapel Street - Navy 3, Green 10

This small, unspoilt museum housed in original four hundred year-old Framework Knitters' workshops and cottages has acquired an international reputation in recent years. As well as its innovative displays, an attractive garden, cosy tea room and shop it has operational Framework Knitting machines – some of which you can try out yourself to create a unique souvenir. The Old Chapel opposite houses an art gallery, with free admission, displaying the work of local painters. Both sites are open all year except January – but please check www.frameworkknittersmuseum.org.uk for seasonal opening times, prices and special events.





Ruddington Methodist Church

Use stop: Chapel Street - Navy 3, Green 10

Dating from 1873 this can be found on Church Street. This is one of four Methodist Church buildings to be found in Ruddington – but the only one still used for worship. It is also a popular venue for many village meetings and events in both the church and adjoining hall.

The Village Museum

Use stop: Ruddington Church - Navy 3, Green 10

This is housed within part of St Peter's Rooms, which was Ruddington's former Victorian school. Founded in 1968, the museum explores retail life in late Victorian and early Edwardian Ruddington through a series of displays which recreate the village shops of yesteryear. These include the world's oldest surviving fish and chip shop interior - relocated from the original premises on the corner of High Street and The Green. The museum is open Easter to September every Thursday 10am – 12noon and on Bank Holiday Mondays 2pm – 4pm. Adult admission is £2.50, concessions £1.50 and FREE for children.



The Graves of the Rorke's Drift Survivors

Use stop: Ruddington Church - Navy 3, Green 10

A short walk along Vicarage Lane will take you to Shaw Street Cemetery. It contains the graves of no less than three of the survivors of just 150 British and colonial troops who successfully defended the Rorke's Drift garrison against an intense assault by 3,000 to 4,000 Zulu warriors in South Africa in 1879. The recently restored headstones of Privates Caleb Wood, James Marshall and Robert Tongue (pictured) can all be found fairly easily.





St Peter's Church

Use stop: Ruddington Church - Navy 3, Green 10

The chapel of St Mary, built in 1459, became Ruddington's parish church when St Peter's Church in nearby Flawford was demolished in 1773. Much of the current Grade II listed Gothic style building dates from 1824 but it retains the chancel and steeple from the ancient fabric. The impressive Brindley & Foster pipe organ was installed in 1908. The church is in frequent use for worship as well as other village events and concerts. The churchyard, war memorial and The Hermitage (to the rear) are worth strolling around to see - even if the main building is locked.



Great Central Railway Nottingham

Use stop: Rushcliffe Country Park - Green 10C (Sundays & Bank Holidays) or The Green - Navy 3, Green 10 (other days), with a short walk from The Green via Elms Park to the GCR(N).

This is the northern terminus of The Great Central Railway (Nottingham) and home to Ruddington's heritage railway and transport museum. There's a café and gift shop, plus miniature and model railways. Vintage steam and diesel trains (including HST prototype 41001) take passengers along almost ten miles of the restored former GCR mainline at weekends and on Bank Holidays from Easter to October and during other transport related events throughout the year. December's Santa Specials are particularly popular and should be booked well in advance via www.gcrn.co.uk to avoid disappointment.



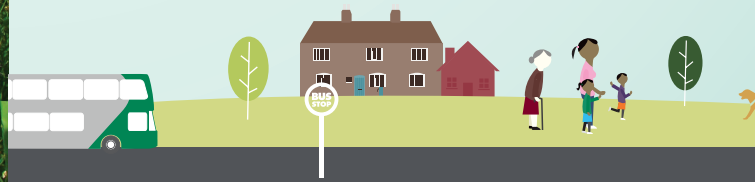


Rushcliffe Country Park

Use stop: Rushcliffe Country Park - **Green 10C** (Sundays & Bank Holidays) or The Green - **Navy 3, Green 10** (other days), with a short walk from The Green via Asher Lane to Rushcliffe Country Park.

This is a Green Flag Award winning open park space. It covers 210 acres, with over five miles of footpaths, and can either be a hive of family activity or a place of individual tranquillity. Around a quarter of a million visitors a year stroll around the pretty park and lake, watch the varied wildlife, explore the woodland trails, find out about its military past or make use of the many outdoor recreational facilities, including an extensive children's play area. There's an Education Centre for youngsters to learn about conservation and where a regular café operates. Dog owners, 4X/BMX cyclists and skateboarders are encouraged to try specially designed courses and equipment. There's even an al fresco gym and table tennis. Entry to Rushcliffe Country Park is free – with no parking charges if you go by bus!

For all the latest Ruddington news and events visit **RUDDINGTON.info**!





Nottingham City
Transport

Your frequent City bus network



We're cleaning up
Nottingham's air with



less Co2*
emissions

from our brand new gas buses!



* Based on Well-To-Wheel GHG saving compared to Euro V diesel equivalent, independently assessed and certified by the Low Carbon Vehicle Partnership.

Nottingham City
Transport

Your frequent City bus network
0115 950 60 70 www.nctx.co.uk

